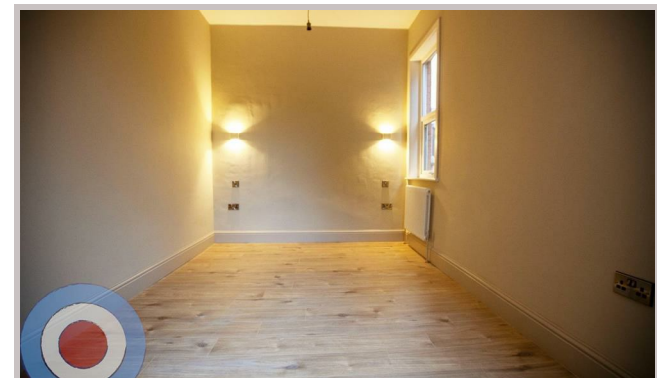




20 Albert Road
Manchester
M19 2FP



20 Albert Road

£1,490 Per month

2 BEDROOM PROPERTY AVAILABLE FROM 16/01/2026

Beautiful scandinavian style boutique apartment in south Manchester boho suburb. We are located less than a minutes walk from the train station with regular services to Manchester Piccadilly in just 6 minutes. The stunning apartment has a open plan lounge, kitchen, diner, bathroom and 2 bedrooms. There is a private carpark to the rear.

- 2 DOUBLE BEDROOMS
- PRIVATE PARKING
- ENERGY EFFICIENT PROPERTY C OR ABOVE
- GREAT TRANSPORT LINKS TO MANCHESTER

Local Authority
Manchester City

Council Tax Band A

EPC Rating C

Contact

01613992619

hello@welcometomanchesterlettings.com

www.welcometomanchesterlettings.com

